

SPOT
THE ANT



STOP
THE ANT

**Join the *Spot the Ant,*
Stop the Ant
*Challenge!***



COORDINATING GROUP ON
ALIEN PEST SPECIES



Department
of Agriculture

STATE OF HAWAII



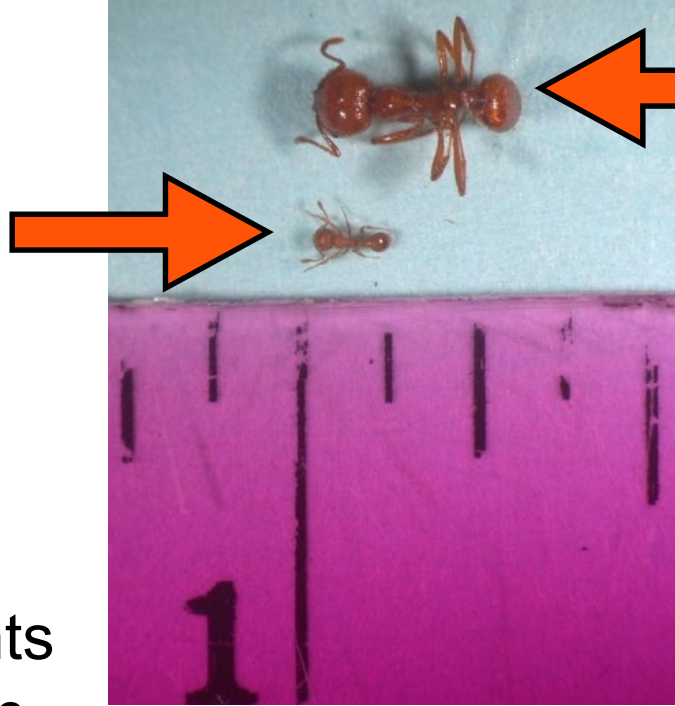
Hawaii Ant Lab

Pacific Cooperative Studies Unit
www.littlefireants.com



You've been stung by ants on O'ahu? They were probably Tropical Fire Ants

Little Fire Ants



Tropical Fire Ant



- Present on Big Island, limited elsewhere
- Live in trees, plants & on the ground in moist, shady areas
- Tough to find nests
- TINY--1/16 inch; as long as a penny is thick

**Little Fire Ants
(LFA) are
smaller, but
much worse**

- Arrived in 1800's, widespread
- Live in sunny, dry areas like parks
- Nests in holes in the ground, easy to find
- BIG--1/4 inch; about 1/3 the size of a penny

Why this isn't “just another ant”



An LFA nest in
macadamia nut shell



- Little Fire Ants are easily moved to new locations because their nests are so small.
- It takes time for these ants to become established in a new area, but once they do, populations reach **244 million ants / hectare** = about 11 million ants / 5000 sf lot

Little Fire Ants

live in trees, on the ground,



in forests, fields & homes...



stings are unavoidable



Little Fire Ants sting people



Stings are small and painful, and create itchy rashes

Little Fire Ants sting animals



Photos: C. Vanderwoude/Hawai'i Ant Lab

Animals can't escape. Repeated stings to their eyes result in clouded corneas and blindness

1999—1 site

2013—10+ sites, eradicated

2014—2 sites, eradicated

2019—8 sites

2009—1 site, eradicated

2013—1 site, eradicated

2014—3 sites, eradicated

2016—1 site

2017—1 site

2018—1 site

2019—1 site

2013—2+ sites

LFA colonies are moving in:

- Plants
- Cut flowers & ti leaves
- Fruit & produce
- Planting materials like hapu`u, greenwaste
- Non-ag products—cinder, even construction materials and vehicles parked in infested areas

1999



**LFA colony in macadamia
nut shell**

Are YOU good at Finding Things?

Join the

Spot the Ant, Stop the Ant

Challenge on your Island!



Green dots are where students & residents collected ant samples and **no** LFA were found. Is your dot on the map?

You Can Help!

1. Take a free Ant Test Kit
2. Use the kit to collect ants from your yard or local park
3. Freeze your ants overnight
4. Take or use the addressed envelope in your kit to mail your bag of dead ants to HDOA for ID
5. We will map the location where the ants were collected—visit www.StopTheAnt.org to see the map and to learn more.

If it the ants are Little Fire Ants, we will work with you to get rid of them!

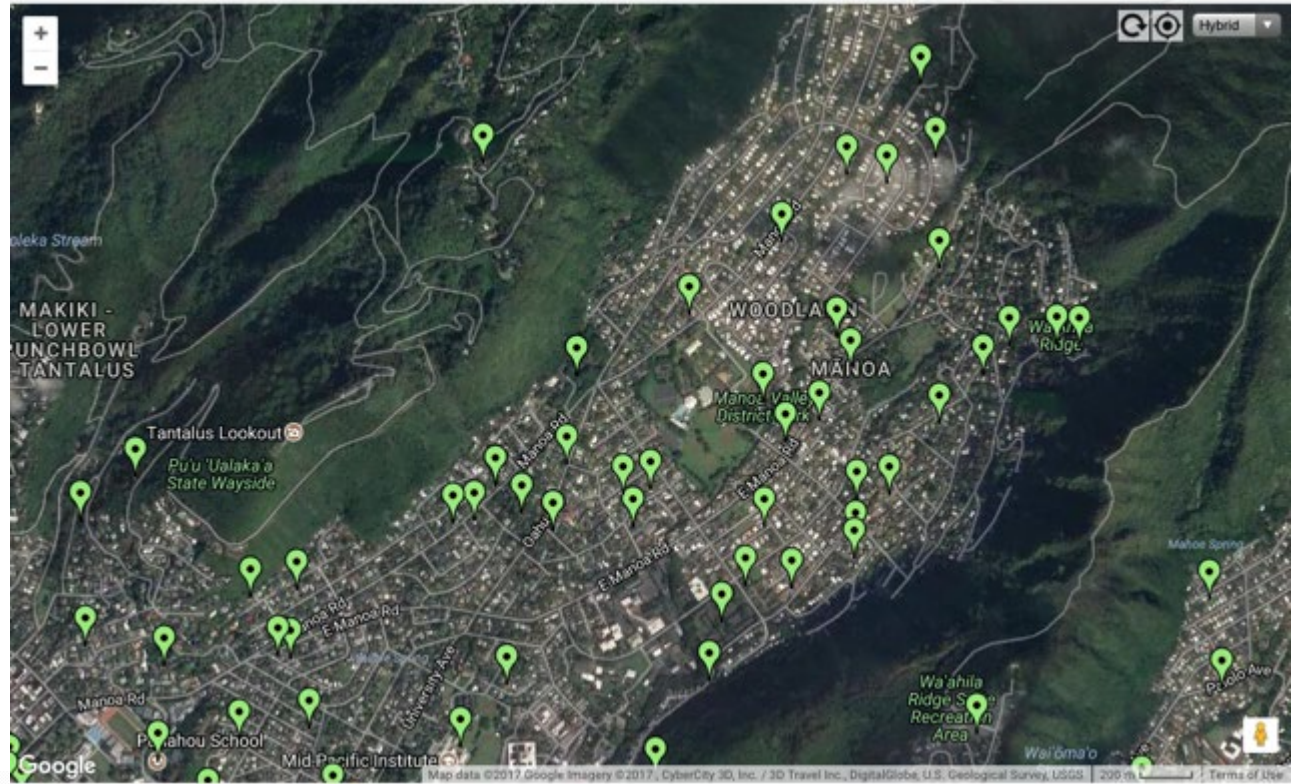
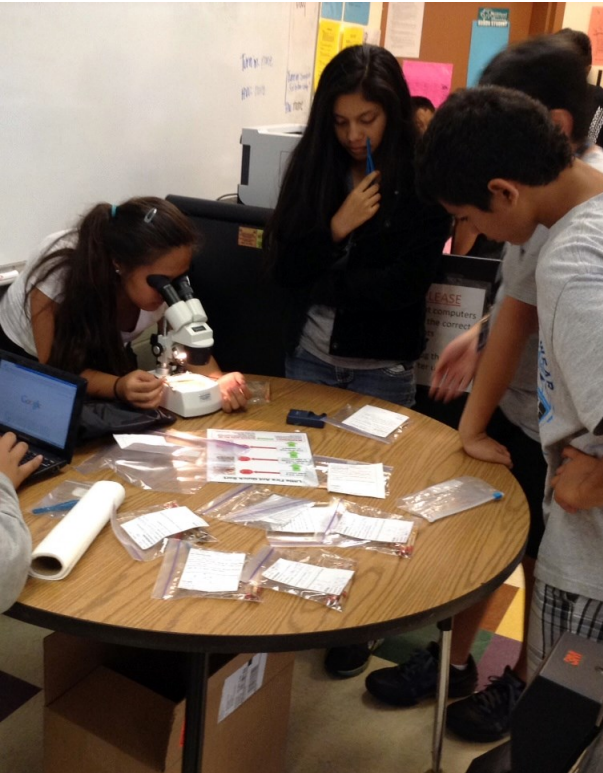


Dip sticks into peanut butter or mayonnaise, place in shady areas around yard



Pick up sticks with ants and place in zip-top bag. Freeze overnight, then send

October is Spot the Ant, Stop the Ant Month! Let's DOUBLE the number of Dots on the map!



www.StopTheAnt.org

